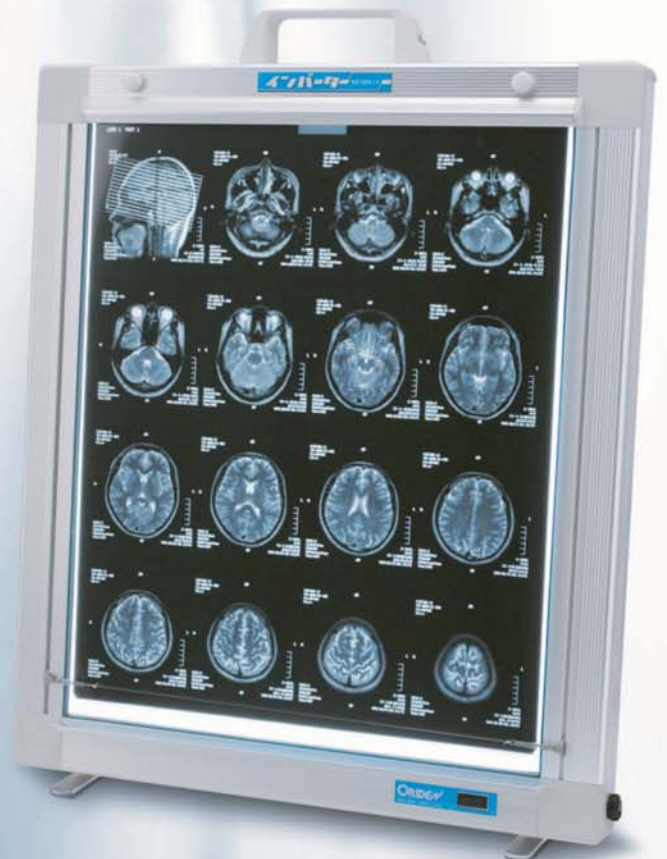


55 years of business with appreciation
of customers' support

Slimmer and More Attractive

Super-Slim Illuminator

NEO30



Support for Medical Care and Welfare Applications
ORIDEN

Orion Electric Co., Ltd.

Employs Hot Cathode Fluorescent Lamp of 8mm in Diameter in Advance of Other Manufacturers!
Super-Slim Illuminator Useful for the Medical Field

NEO30 Series

The following are the differences from the cold cathode fluorescent lamp illuminators of other manufacturers!

- 1 Electrically Safe**
Safe from serious accidents caused by electric shock as the NEO30 Series does not require application of voltage (about 1800V) to the electrode, unlike cold cathode fluorescent lamp.
- 2 Easy Lamp Replacement**
The NEO30 Series requires fewer lamps than the cold cathode fluorescent lamp models and the wider lamps (ø8mm) are stronger and can be removed and installed easily.
- 3 Safe Design with Operation Error Prevention Feature**
The inverter is run with 48kHz, avoiding the 33kHz band, which is frequently used for medical equipment.

The NEO30 Illuminator Complies with the JIS Z4918 Standard.

Extract from Medical X-ray radiography viewing device, Japan Industries Association (JIS) Z 4918

Types by the nominal dimension of the observation area	Nominal dimension	Vertical dimension	Horizontal dimension
	356×432mm 14"×17" film	432 \pm ¹⁰ mm	Integral multiple of 356mm \pm ¹⁰ mm
356×356mm 14"×14" film	356 \pm ¹⁰ mm	Integral multiple of 356mm \pm ¹⁰ mm	

- 1 Repeated Lighting**
After connecting to the power supply, the illuminator cycles on and off five times at the interval of 10 seconds or more without noticeable delay.
- 2 Light Source**
The light source used for the observation equipment has the performance equivalent to the fluorescent lamp complying with JIS C7601 or higher and the light source is a daylight color, a day white color, or a white color.
- 3 Brightness of the Observation Area**
The result of the test conducted according to JIS Z4918 shows the luminosity of 3,000cd/m² at the center of the observation area.
- 4 Diffusive Feature**
The result value T of the test conducted for the diffusive feature according to JIS Z4918 shows 0.9 or higher.
- 5 Uniformity of brightness of the observation area**
The result value T of the test conducted for uniformity according to JIS Z4918 shows 0.5 or higher.
- 6 Flickering**
No significant flickering that interferes with the observation of X-ray photographs.
- 7 Electric Shock Protection**
Within the permissible value of the class I type B equipment that is specified in JIS T0601-1.

For 1 Piece of 14"x17" Film

General medical device class I JMDN code: 36488000

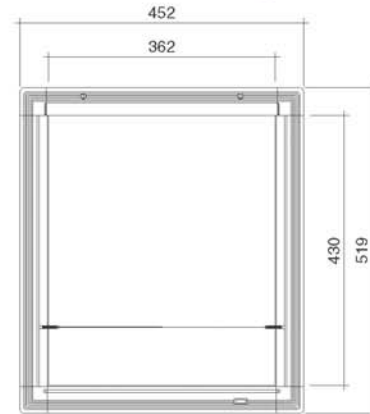
Mobile type
ORS-NEO-111-MT



Desk-top type
ORS-NEO-111-T



Wall type
ORS-NEO-111-W

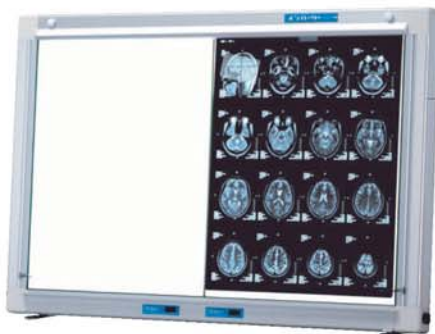


Type	External dimension (mm)	Electrical rating	Film size	Lighting method	No. of lamps	Luminosity	Weight
ORS-NEO-111	W452XH519XD36	AC100V 50/60Hz 1.0A	14"x17" film (1 piece)	Inverter	10.2Wx4	3,000cd/m ²	5.5kg

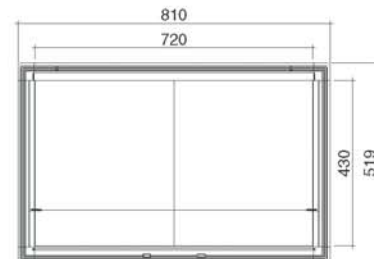
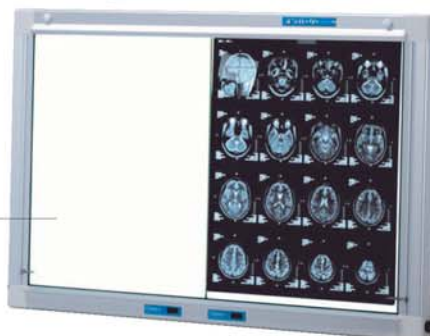
For 2 Piece of 14"x17" Film

General medical device class I JMDN code: 36488000

Desk-top type
ORS-NEO-211-T



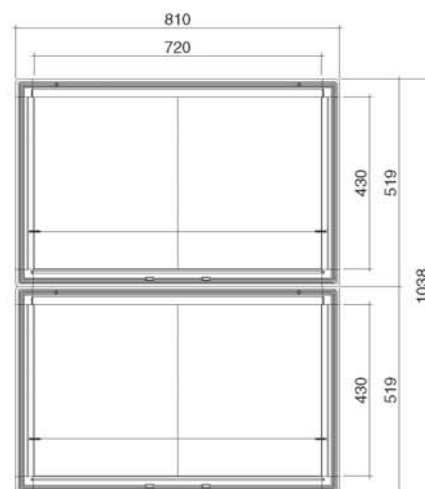
Wall type
ORS-NEO-211-W



Type	External dimension (mm)	Electrical rating	Film size	Lighting method	No. of lamps	Luminosity	Weight
ORS-NEO-211	W810XH519XD36	AC100V 50/60Hz 2.0A	2 pieces of 14" x 17" film	Inverter	10.2Wx8	3,000cd/m ²	9.0kg

For Double illuminator for 2 Pieces of 14"x17" Film General medical device class I JMDN code: 36488000

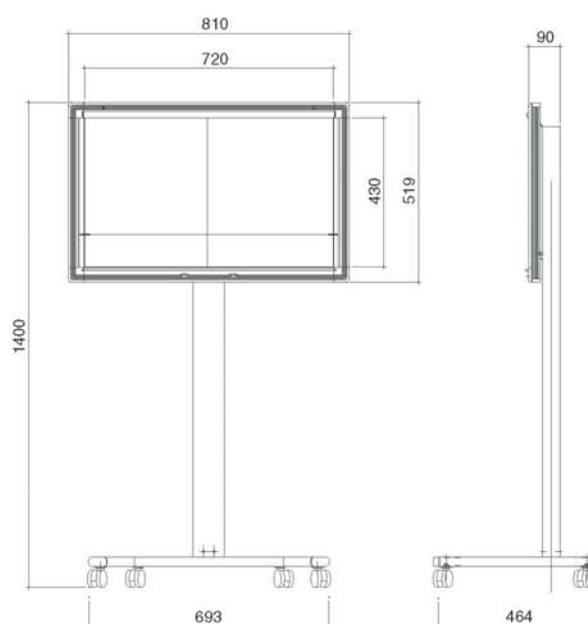
Wall type
ORS-NEO-221



Type	External dimension (mm)	Electrical rating	Film size	Lighting method	No. of lamps	Luminosity	Weight
ORS-NEO-221	W810XH1038XD36	AC100V 50/60Hz 4.0A	4 pieces of 14"x17" film (2 pieces x 2)	Inverter	10.2WX16	3,000cd/m ²	18.0kg

For 2 pieces of 14"x17" Film with Wheel Stand General medical device class I JMDN code: 36488000

Illuminator with
wheel stand
ORS-NEO-211-Y



Type	External dimension (mm)	Electrical rating	Film size	Lighting method	No. of lamps	Luminosity	Weight
ORS-NEO-211Y	W810XH1400XD464	AC100V 50/60Hz 2.0A	2 pieces of 14" x 17" film	Inverter	10.2WX8	3,000cd/m ²	20.0kg

Characteristics of NEO30 Illuminator



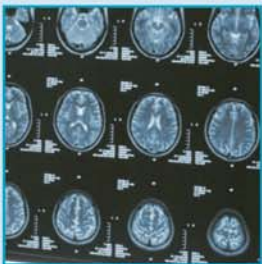
The Portable Asset with a Handle to Carry Anywhere

The mobile type illuminator with handle for one of "14 x 17" film can be carried anywhere inside or outside of the hospital. Radiograms can be interpreted whenever possible.



Simple and Stylish Design

The simple and stylish design with aluminum frame can be used as a desktop type or wall type to suit the examination room.



Luminosity 3,000cd/m²

The luminosity of the effective emission area is 3,000cd/m² and the light diffusiveness and brightness uniformity comply with the JIS standard.



No AC Adaptor Required

The NEO30 illuminator does not require the AC adaptor used for the cold cathode fluorescent lamp slim type illuminator. The power supply cable can be directly connected to the AC100V socket.



36mm

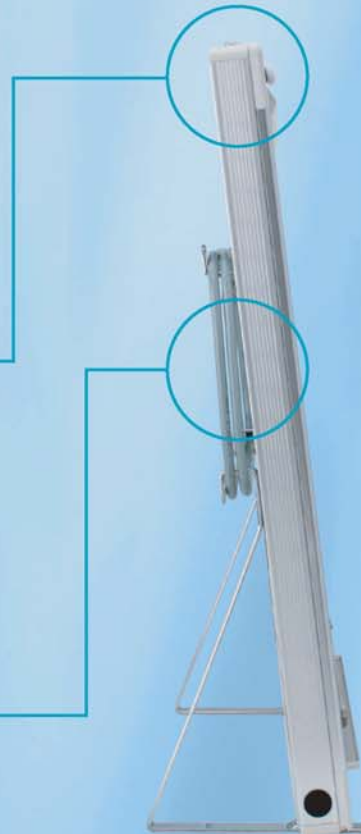
Slim 36mm Type

By applying the edge-lighting method, the slim 36mm type illuminator was realized. The slimness of the illuminator was vigorously pursued.



Efficiently Stored Power Code

The power code can be stored efficiently by the power cable holder that is integrated with the desktop stand (Item No. ORS-NEO-T).



Options

Handle No.:ORS-NEO-M



Support model:
For 1 of 14" × 17" film: ORS-NEO-111



Desk-top stand No.:ORS-NEO-T



Support model:
For 1 of 14" × 17" film: ORS-NEO-111
For 2 of 14" × 17" film: ORS-NEO-211



Wall installation bracket No.:ORS-NEO-W2



Support model:
For 1 of 14" × 17" film: ORS-NEO-111
For 2 of 14" × 17" film: ORS-NEO-211
For 4 of 14" × 17" film: (2 × 2): ORS-NEO-221

By using the model as a wall type, the space of the examination room can be used efficiently.



Desk-top stand No.:ORS-NEO-S



Support model:
For 1 of 14" × 17" film: ORS-NEO-111
For 2 of 14" × 17" film: ORS-NEO-211

Installation example:
For 1 of 14" × 17" film



Installation example:
For 2 of 14" × 17" film



Note that we reserve the right to alter specifications herein without notice for the purpose of improving our product.

For orders and inquiries, contact:

General medical device class 1 JMDN code: 3648800
Obtained Certificate of medical device marketing authorization. (No.23B2X00016)
Obtained Certificate of medical equipment manufacturer. (No.23BZ000451)
Member of the Japan Industries Association of Radiological Systems



Orion Electric Co., Ltd.

Head Office / Business Office

5-8-24, Sakae, Naka-ku, Nagoya-shi, Post Code 460-0008
Phone : +81-52-261-0706 Facsimile : +81-52-261-0798

Tokyo Business Office

No. 101 Florence Palace Ochanomizu Fianco, 3-22-2, Hongo, Bunkyo-ku,
Tokyo, Post code 113-0033
Phone : +81-3-5800-6780 Facsimile : +81-3-5800-6781

Inazawa factory

4-7, Kusakabe-Kita-machi, Inazawa-shi, Aichi, Post Code 492-8181
Phone : +81-587-23-0467 Facsimile : +81-587-23-0477

URL <http://www.oriden.co.jp>